



COMMUNITY BASED CARE OF CENTRAL FLORIDA

Report to the Community

Board of Directors 2016-2017

Owen Wentworth
Chair, CBC Holdings

Jason Smith
Chair, Community Initiatives

Penny Jones
Chair, CBCCF

Brian Fox
Chair, CBC-IH

Greg Barnett
William Belt
Michael Bryant
Jeff Cannon
Glen Casel
Ernie Hamilton
Mark Jackson
Sara Mercado
Mike Neswold

Susie Oliver
Christy Pavel
Teri Saunders
Shawn Smith
Ma. Jimena Valesquez
Tara Hormell
Ex Officio
Greg Zyblut
Ex Officio

County Advisory Boards

Greg Barnett
Noel Beary
Crocket Bohannon
Beth Boyer-Kollas
Mercedes Fonseca
Viviana Frias
Garrett Griffin
Amy Kleeman
Twis Lizasuain

Mike Neswold
Lien Nguyen
Tom Phelps
Holly Quaintance
Kevin Shendok
Shawn Smith
Desmond Taylor
Owen Wentworth
Greg Zyblut



Provider Board

Tara Hormell
Chair
Terri Balliet
Anna Bazniz
Allan Chernoff
Anna Colon
Shawn Downs
Seyny Dressler
Jeanne Gold

Garrett Griffin
Eva Horner
Lisa Kroger
Katherine Norfleet
Colleen Riddle
Tracy Salem
Desmond Taylor
David Volz
Greg Zyblut

“As you will discover through this *Report to the Community*, strides are being made daily to ensure the well-being of Central Florida’s youth in foster care. Today the children we serve benefit from expanded healthcare programs; innovative community initiatives designed to break through barriers to success; a growing group of champions, including foster parents, mentors, guardians ad litem; and much more. While we are proud of these successes, we are acutely aware that none of this would be possible without the strong network of state and community partners that share our commitment to keeping kids safe and their hopes and dreams alive.”

-- *Glen Casel, President & CEO*



“My involvement with Community Based Care of Central Florida has opened my eyes to the many and complex needs of the children who enter the child welfare system; and to the vast responsibility that we have, as a community, to ensure that these children’s futures are not indelibly tarnished by the events that have brought them here through no fault of their own. The many donors, partners and volunteers listed within this report provide essential support. ***Thank you*** for your commitment to helping us protect and inspire the vulnerable children who rely on us for care.”

-- *Shawn Smith, Chairman, CBCCF Holdings, 2015-2016*

Community Based Care of Central Florida

Our Mission

Every child deserves to live in a **safe**, **stable** and **loving** home.

But sometimes, they don't get what they deserve. That's where Community Based Care of Central Florida steps in. In Orange, Osceola and Seminole counties, we protect and care for children suffering from abuse, neglect and abandonment – helping kids in bad circumstances move toward brighter futures.

Our Role

Community Based Care of Central Florida accomplishes this mission through management of a comprehensive and coordinated system of care that is embedded here, in the local community. Our one (and only) priority is simple and straightforward: doing what is in the best interest of the child.

When possible, this approach starts with prevention and by addressing the root causes of abuse and neglect, such as homelessness or substance dependency. Depending on the needs of the situation, we either provide necessary support to help keep families intact or work through our provider partners to find a safe alternative for the child, either with a concerned relative or into foster care. Ultimately our goal is for each child to be part of a “forever family”, whether that is through adoption or reunification with his or her biological family.

CBC's safety net doesn't close once the child resides in a safe place. Recognizing the critical importance of breaking the cycle that encumbers the child welfare system, Community Based Care of Central Florida manages an array of innovative programs focused on cultivating the education, life skills, and inspiration that vulnerable young people need to succeed on their own. Just as with any parent, personal satisfaction and successful transition into adulthood is our foremost ambition for the children in our care.



Our Impact

Each day, Community Based Care of Central Florida provides care and support for up to **3,000 youth in foster care** throughout Orange, Osceola and Seminole counties. In addition, our Diversion/Prevention programs served **3,300 local families** over the past year, thereby addressing the specific needs of households that included **6,327 children**. Highlights of the past year include:



CBC of Central Florida recruited and licensed 100 new foster homes to serve children in need; facilitated 196 adoptions into “forever homes”; and helped reunite 872 children with their biological families.



The CBC Integrated Health program, which manages the healthcare needs of 36,000 youth throughout Florida, expanded to provide coverage to adopted youth, as well as to those who were formerly in foster care.



With funding from Heart of Florida United Way, we expanded our Kinship Support Program in Osceola County, offered by The Children’s Home. This program, along with its counterpart in Orange County, offers supportive resources to grandparents and other family members that care for children who would otherwise be placed in a licensed foster home or group home.



Our Youth Services program celebrated the high school graduations of 59% of our eligible foster youth, and the post-secondary graduations of 13% of our eligible former foster youth. (Particularly notable when compared to national averages of just 25% high school and as low as 3% of former foster youth graduating with a 4-year degree.)



In Seminole County, Pathways to Home worked closely with 70 families (and over 200 children) as they transitioned from homelessness to stable housing and employment. During the same period, Children’s Advocacy Center Osceola provided services to 621 children, including 143 forensic interviews and 399 forensic medical evaluations.



The Keys to Independence program assisted more than 400 young people throughout Florida obtain drivers licenses and permits; while a donation from IBERIABANK helped establish a unique fund to help Central Florida youth in foster care secure vehicle loans.



Over 75 caring volunteers made a direct impact on the life of a foster child as part of our Legacy Mentor program.

Our Unique Approach

In 2000, when then Governor Jeb Bush launched a comprehensive redesign of Florida's Child Welfare System, he positioned Florida to become a national leader in designing and implementing a *community-based* and *community-driven* approach to caring for children who are the victims of abuse, neglect and abandonment. This innovative approach, which is distinguished by the outsourcing of foster care and related services to proven, locally-based service agencies, has become known as Florida's "Community Based Care" model.



In Central Florida, *Community Based Care of Central Florida* – which is a private, not-for-profit, 501(c)(3) organization—is the lead agency for child welfare services in Orange, Osceola and Seminole counties. In true collaboration, we accomplish this responsibility by working in partnership with a network of primary service providers to oversee foster parent recruitment and licensing, case management, residential home care, diversion and family support services. Case management partners include: Devereux, One Hope United and Children's Home Society in Orange County; Gulf Coast Jewish Family & Community Services in Osceola County; and Children's Home Society in Seminole County.



While more traditional child welfare programs are crisis driven -- focused on the most immediate needs of child protection and safety -- our model here in Central Florida has expanded to include all three components of what are considered to be best practices in child welfare today: ensuring *safety*, providing *permanence*, and maintaining the *well-being* of the child.

The scars left on children whose life circumstances lead them into community care are not quickly or easily erased. As the illustration that follows reflects, Community Based Care of Central Florida's child-centered continuum of care takes a holistic approach to preventing, addressing, and helping the victims of childhood trauma move forward.

CBC's Child-Centered Continuum of Care



Our Family of Companies

It goes without saying that managing the many and varied needs of the children and families in our care can be a complex process. Just as any family juggles multiple priorities – security, healthcare, education, and budgeting, to name a few – our Family of Companies allows us to most effectively manage an array of innovative programs and priorities while remaining focused on a single, unwavering goal: to serve “every child, every day”.

Community Based Care of Central Florida – Holdings(CBCH)

CBC of Central Florida Holdings (CBCH) was organized as the managing parent company to provide governance and to oversee the direction for the Family of Companies. This structure allows each entity to leverage combined resources and to maximize creative, strategic planning while ensuring sustainability and support to the overall mission. Primary functions include contract negotiation, finance, IT, human resources, marketing, public relations, public affairs, and administrative support.



Everybody wants someone to love them. They want somebody to make them feel like they are worth something. When I put my arms around them and let them know it's going to be okay, I feel the way they relax in my arms. That is what makes it worth it to me.

-- Rhonda & Russ, foster parents



Community Based Care of Central Florida (CBCCF)

As the region's lead agency for child welfare services, CBCCF works in partnership with a network of primary service providers to oversee the core operations of our business: foster/adoptive parent recruitment and licensing, case management, residential home care, diversion and family support services.

Additional programs managed through CBCCF include:



Kinship Services Network of Central Florida identifies and strengthens support for relatives who can provide a secure alternative in lieu of children entering the formal licensed foster care system.



Through the **Keys to Independence** program, CBCCF serves as the statewide administrator to help youth in licensed care complete driver's education, earn their driver's license and offset costs for auto insurance.



For youth who have turned 18 and are enrolled in post-secondary education, the **AOK Scholars** program provides financial assistance related to basic necessities, academic needs and personal development.

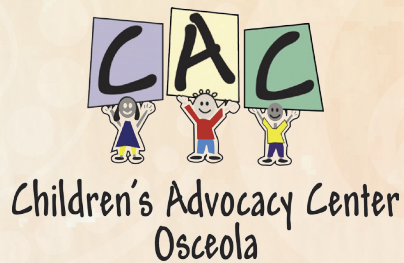


Legacy Mentor Program pairs youth in foster care with volunteer mentors who serve as a positive and consistent role model regardless of placement changes.

Community Initiatives (CBC-CI)

Community Initiatives was created to help expand beyond the traditional capacity of child welfare services. Through this innovative and solutions-driven organization, we work to overcome barriers to best support children and families.

Programs managed through CBC-CI include:

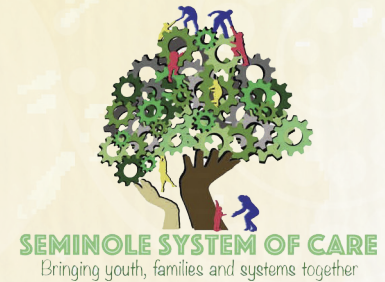


Children's Advocacy Center (CAC)

Osceola provides a safe haven and comprehensive services for children and non-offending family members that are victims of child sexual and physical abuse.



Pathways to Home is a collaborative effort among community nonprofit agencies, faith-based organizations and individuals to eliminate child homelessness in Seminole County.



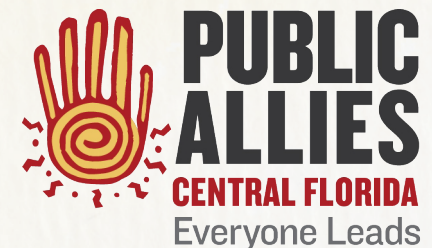
The **Seminole System of Care (SSOC)** mental health grant is focused on improving mental health outcomes for youth up to age 21 with serious emotional disturbances, along with supporting their families.



First Star Central Florida Academy is an intense, year-round program that provides youth in foster care with the academic support and encouragement needed to become competitive applicants for admission to college. During the summer, the students spend four weeks living on the campus of the University of Central Florida.



Funded by The Able Trust in partnership with CBCCF, **High School High Tech (HSHT)** encourages foster youth to explore careers in science, technology; engineering and mathematics (STEM) related fields – with the goal of increasing participation in educational, vocational and employment-related activities.



In partnership with the AmeriCorps national service network, **Public Allies Central Florida** trains young leaders to become values based leaders that focus on just and equitable society for all. The CBC Public Allies staff recruits and places Allies in non-profit agencies throughout Central Florida.

Community Based Care Integrated Health (CBC-IH)

Today in Florida, over 36,000 youth in foster care benefit from a comprehensive Medicaid health program managed by CBC Integrated Health, which is a for-profit venture operated in partnership with Juno, CBC Holdings and 15 other lead CBC agencies in Florida. Our partners in Florida's Child Welfare Specialty Plan are Sunshine Health and Cenpatico.

CBC-IH serves as the statewide corporate home to manage the delivery of medical, dental and mental health services covered by Medicaid to the children of Florida's child welfare system. The program was recently expanded to include those adopted out of foster care.

CBC Foundation

As the newest member of our family, efforts of the CBC Foundation are focused on enhancing funding, resources and community support for the CBC Family of Companies. The many corporate and individual donors who contribute to our success are listed in the back pages of this *Report to the Community*.



My eleven years in foster care taught me that the beauty of strength is taking the *broken pieces* and putting them *back together*.

-- Eveline, former youth in foster care



Our Year in Review



DDI: Our captivating annual ballroom dance competition brought a record-breaking crowd to this year's Dance Dream & Inspire at Hard Rock Live. While Southwest Airlines' Valencia Feijoo and CBC's own Gerry Glynn took top prizes, the real winners are the children and families who benefit from this major fundraising event.



Graduation Party: Oh the places they'll go! We celebrated the accomplishments of 51 current or former foster youth who are overcoming the odds by graduating from high school, community college, technical school or a four-year institution during the 2015-2016 academic year.



Cars for Kids Giveaway: A lack of transportation can be one of the most significant barriers to success for youth in foster care. Helping to remove this barrier through their Cars4Kids program, Reed Nissan presented two brand new Nissan Altimas to Natalia Rodriguez and Melissa Rose Joseph.



Christmas Extravaganza: Santa Claus found himself surrounded by dinosaurs, rather than reindeer, during our Christmas Extravaganza party for foster families, which was hosted this year by the Orlando Science Center.



Winey Wench Fundraiser: Friends and supporters of CBC came together to raise funds while enjoying an afternoon of painting at the Winey Wench Oviedo.



NAD: 38 children joined their "forever families" during National Adoption Day celebrations held on November 18 in Orange, Osceola and Seminole counties.



First Star Year End Celebration: With their second summer at the University of Central Florida under their belt, our now rising sophomores in First Star Central Florida Academy reflected back on their experience through presentations and skits surrounded by friends, families, and caring staff members.



Light of Hope: CBC partnered to host the Light of Hope ceremony during National Child Abuse Prevention Month, allowing us to remember the thousands of abused and neglected children in Florida and to recognize those who provide them with a voice.



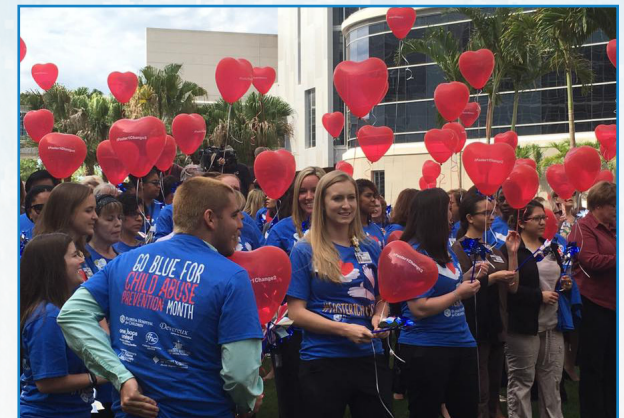
Public Allies Award: Public Allies Central Florida received national recognition for their immediate and direct involvement in helping the Orlando community through two recent tragedies: the Pulse nightclub shootings and the drive-by shooting of Parramore youth leader Gino Nicholas.



Forever Families: This year, 16 children were featured on WFTV Channel 9's Forever Family segment. Hosted by anchor Martha Sugalski, this inspirational program provides a means for youth eligible for adoption to share their hopes and dreams of finding a forever family of their own.



CAC Breakfast: Child abuse survivor Jenna Quinn discussed the national health crisis of child abuse and neglect, encouraging support for our Children's Advocacy Center Osceola, which provides a safe place for abused children to begin their journey towards healing.



Florida Hospital Partnership: To help meet the critical need for 100 more foster families, Florida Hospital for Children and CBC of Central Florida launched a unique public awareness campaign called #FosterIChange2.

Our Donors



GIVING SOCIETY

Brian Britton
Veronica Concepcion
Lisa Franchina
John & Diane Mahony
Peter Perley
Robert Phillips II
Ron Rawson
Carmela Sanders Schaefer
James Summers
John Tankersley

Gilmore Products
Give Kids Safe Shelter, Inc.
Guildford Holdings, LLC
Hard Rock Cafe Orlando
Heart of Florida United Way
HotelBeds USA
IBERIABANK
In the Dark Entertainment
IPRG
IWLCA, Inc.
Junonia Capital LLC
Lawrence E. White Family Foundation
Lee Constantine's Charity Challenge
Osceola Sheriff's Office
Pardy & Rodriguez, P.A.
Picerne Development Corp.
PowerDMS
Reed Nissan
Rollins College
Rowe Manufacturing
Seaworld Parks & Resorts Orlando
Simpkins Family Foundation, Inc.
Spectrum Reach
St. Luke's Lutheran Church
The Perry Group
Thrivent Financial
Titan Electric Southeast LLC
TQL Foundation, Inc.
Traveling Tutus
Trinity Preparatory School
Tupperware Brands
Universal Orlando Resort
Valley National Bank
Wells Fargo Bank Ohio-Foundation
Wepay



CORPORATIONS

Advanced Millwork
American Automotive Association
America's Office Source
AT&T Corporate
Behavioral Support Services, Inc.
Castro Realty Group
Centene Management Co., LLC
Central Florida Association of Physicians of
Indian Origin
City of Kissimmee Police Dept.
Click2Give Orlando
Costa Communications Group
CyberGrants, Inc.
DEX Imaging, Inc.
Disney Worldwide Services, Inc.
Edward Jones
Expedia
Fifth Third Bank
First Star, Inc.
Florida Community Bank, N.A.



Westgate Resorts Foundation, Inc.
Windsor Services, Inc.
Winey Wench Oviedo, LLC.
WOAMTEC

INDIVIDUALS (Gifts of \$250+)

Emmanuel Agon
Katherine Anderson
Curtis Arnold
Raeann Bacchus
Cynthia Barber
Greg and Joanne Barnett
Serita Beamon
James Bellonzi
Michelle Billhartz
Gary and Michelle Bowles
Kim Brien and Dave Beaty
Maureen and Chris Brockman
Donna Brown
Dee Brown
Michael and Terri Bryant
Joan Butcher
Jeffrey and Holly Cannon
Michelle Carlton
Glen and Tara Casel
Paul Curran
Marian Damiani and Andrea Milano
Diane and Jim Demark
Christie and Joe Denave
Jacob Eisenstein
Osman and Nida Farooq
Dennis Ferguson
Patricia Gallagher
Mayor Charlene Glancy

Lawrence and Deborah Glynn
Gerry Glynn and Angela Halladay
David Green
Diane Greene
Christine Greves
Ali Hakimian
Holly Halladay
Leonard and Judy Hartman
James and Michelle Hasley
Katria Haynes Jenkins
Gayle Hicks
Blake and Sandy Hostetter
Christi Johnson
Cecilia and Matt Kelly
Kurt and Sarah Kelly
Traci Klinkbeil
Gail and Thomas Lemery
Debbie and Mark Leon
Erik Lindquist
Sharon McKay
Silvia McLain
Johanna Medina
Sara Mercado
Judy and Eric Mumford
Jim and Yassi Myers
Bryan and Sharon Nelson
Michael and Nicole Neswold
Sharon Older
Barbara Overton
Rajul Patel
Patricia Peisker
Paul and Janet Picone
Sandra Porche
Michael and Hali Poteshman
Sue Protheroe





Ron Rawson
 Kyle and Amanda Reineck
 Charles and Carolyn Riske
 Martin and Kerin Roche
 Paul and Katrina Romero
 Dennis Salvagio
 Dede Schaffner
 Karen Sheehan
 Kevin Shendok
 Shawn and Michelle Smith
 Brittany Sobering
 Jill Spannagel
 Beth Spinda
 Wayne Starr
 Joshua Strzalko
 John Tankersley
 Thyra Thomas
 Gia Tutalo-Mote
 Shirley Vaughan
 Toby Walker
 Slylina Walsh
 Lisa and Bill Warren
 Owen Wentworth

GRANTS

City of St. Cloud
 Florida Network for Children's
 AdvocacyCenters
 Florida Office of the Attorney General
 Foundation for Seminole County
 Public Schools
 Heart of Florida United Way
 Homeless Services Network
 Lawrence E. White Family Foundation

National Children's Alliance
 Orange County Housing & Community
 Development Division
 Osceola County, CommunityVision
 PNC Foundation
 Public Allies National Office
 Seminole County Community Services
 Siemer Institute for Family Stability
 Southern Regional Children's
 Advocacy Centers
 The Able Trust
 Walt Disney World

IN-KIND

Ashley Lane Moore
 BJ's Wholesale Club
 Blake Guyre Music
 Buffalo Wild Wings
 Chick-Fil-A
 Deadly Sins Brewing
 Disney Worldwide Services, Inc.
 Dunkin Donuts
 Expedia
 Flippers Pizzeria
 Gatorland
 Jump Bean Jump
 Lake Mary Life Magazine
 Lowe and Behold
 Mangos Tropical Café
 McDonald's
 Misty Miotto Photography
 Mr. Harley - Children's Entertainer
 Pepsico
 Picerne Real Estate Group

Pizza Hut
 Publix
 RF Photography - Frank Weber
 Rosen Hotel & Resorts
 SeaWorld
 Swag Décor
 Sweets By Holly
 The Porch
 Tickled Pink! Weddings + Events
 UCF Theta Sorority
 Universal Orlando
 Wawa
 WFTV 9 Family Connection
 Wild Florida
 William Fischer

HOLIDAY GIFTS -- INDIVIDUALS

Kassie Berger
 Michelle Blanchette
 Paige Blinderman
 Denise Bower
 Miriam Cedeno
 Linda Clem
 Eric and Julie Dietrich
 Courtney Dixon
 Ada Gomez
 Nicole Hamilton
 Lisa Hartley
 Gayle Hicks
 Beverly Hund
 Traci Klinkbeil
 William and Pamela L'Heureux
 Nina Lopez-Woodley

Brian and Susan Lowe
 Julia Mailoux
 William Montgomery and
 Elizabeth Mallicote
 Erica Nesmith
 Mark Noll
 Susie Oliver
 Andrea Patenaude
 Kyle and Amanda Reineck
 Sharlene Salvary
 Peter and Ann Marie Smith
 Kelley Teague
 Lissette Vellez
 Keri Watts
 Sheila Wheeler
 Andrew and Alicia Ziermann



HOLIDAY GIFTS -- CORPORATIONS

AT&T
Baker Hostetler
Century Financial Group
Circle Of Friends
CRU
Dr. Phillips Hospital
Dr. Phillips Hospital Telemetry Unit
Dr. Phillips Center for the
Performing Arts
EPIC Engineering and Consulting
Florida Citrus Sports
Girls Scouts
GPS Dental Lab
Gulf State Credit Union
Holy Cross Lutheran Academy
IBERIA Bank
Informa Software
Ingenuity Engineers
Kroger Pharmacy
McCree General Contractors &
Architects
Merrick Damon Real Estate
Metro Orlando EDC
Oakland Presbyterian Church
OmniTicket
Orlando City Soccer
Orlando Health

Orlando Health South Seminole
Hospital
Pardy and Rodriguez
Pearson and Bitman
Primrose School
Ramski & Co.
Regions Bank
Ritz Carlton
Roach Chiropractic
Seacoast Bank
Sisters Speakeasy
Spanish for Workplace
Summit Church
Synergy Oviedo Chiropractic
Tickled Pink Weddings and Events
Toys R Us
Traveling Tutus
Triad Isotopes
Volt
Waterford Lakes Community Association
Wiginton Fire Systems



I'm here to help young adults get to where they want
and need to be in life. Obtaining somewhere for them to live
is essential, however, helping them to become *productive*
members of society is the ultimate goal.

-- Meinrad, youth housing specialist





Boe Marshall
Luz Marte
Elyssa Martinez
Zina Matthews
Lisa Mausner
Eva McClover
Lisa McCormick
Angel McCurdy
Iliana McGiboney
Allison McLellan
Meghan McNash
Kristi Middlebrook
Darla Miller
Berna Mills
Deondra Milton
Misty Miotto
Nelio Miotto
Susan Mitchell
Anwar Moledina
Vanessa Monn
Christina Montalvo
Henry "Charles"
Mullen
Diana Munoz
Yiemy Najera
Brian Nelson
Brittany Nesmith
Melanie Nesmith
Rachel Neyhart
Darcy Nichols
Stuart Nichols

Billie Sanderson
Melanie Sandvig
Jade Schnovel
Laure Sellers
Felicia L. Sherman
Connie Slack
Brittany Sobering
Angie Sola
Betty Streicher



Shaikh Sultani
Ellen Taylor
Heloise Thompson
Chris Thompson
Jessica Thompson
Cecilia Torres
Edwin Torres
Denise Velez
Lissette Velez

George
Waldenberger
Eric Walker
Monifa Walker
Christine Walker
Frank Weber
Vanessa Weber
Aakhir Wheeler
Chad Williams

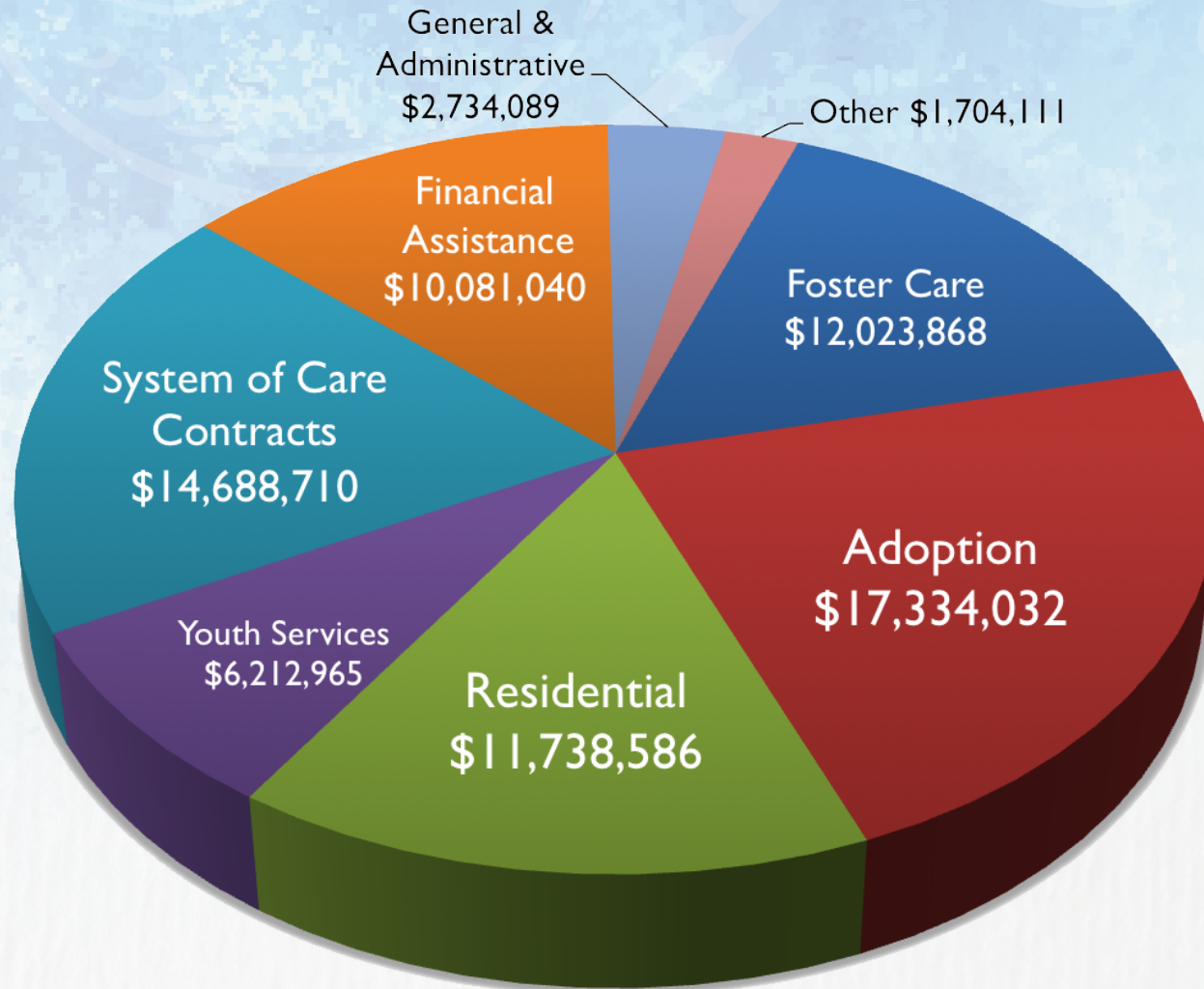


Crystal Williams
Madison Winter
Tina Winter
Ben Woodruff
Kotrish Wright
Richard Wyrick
Sammie Zettler
Breanna Zimmerman
Sanja Zubia



Financial Review: Fiscal Year 2015-2016

Community Based Care of Central Florida incorporates numerous best practices from the nonprofit industry. Financially speaking, our goal is to deliver the greatest return on state, federal and donor funding by creating the best results for children and families. The chart below reflects our 2015-2016 fiscal year financial statement.



Total Expenses: \$76,517,401

Our Partners

Community Based Care of Central Florida relies on a number of agencies, providers and advocacy centers to serve as many as 3,000 vulnerable children each day. Through our many partnerships, specifically with Florida's Department of Children and Families, we have grown to become the region's leading child welfare organization. Together, we provide a strong source of stability, hope and love.

Bethany Christian Services of Florida, Inc.

Boys Town of Central Florida, Inc.

Children's Advocacy Center Osceola

Children's Home Network, Inc.

Children's Home Society of Florida, Inc.

City of Life Foundation

Devereux Foundation of Florida, Inc.

Florida Baptist Children's Home, Inc.

Foundation for Foster Children

Grace Landing, Inc.

Gulf Coast Jewish Family & Community Services, Inc.

Harbor House of Central Florida, Inc.

Help Now of Osceola, Inc.

IMPOWER, Inc.

Kids House of Seminole Inc.

One Hope United, Inc.

Orange County Youth & Family Services

Orlando Health, Inc. The Howard Phillips Center for Children & Families, Part of Arnold Palmer Hospital for Children

Safehouse of Seminole, Inc.

Youth Advocate Programs, Inc.

Case Management Agencies

Children's Home Society of Florida, Inc.

Devereux Foundation of Florida, Inc.

Gulf Coast Jewish Family & Community Services, Inc.

One Hope United, Inc.

Child Placing Agencies/Foster Home Support

Children's Home Network, Inc.

Florida Baptist Children's Home, Inc.

Children's Home Society of Florida, Inc.

One Hope United, Inc.

Devereux Foundation of Florida, Inc.

Children's Advocacy Centers

Children's Advocacy Center Osceola

Kids House of Seminole, Inc.

Orlando Health, Inc. The Howard Phillips Center for Children & Families, Part of Arnold Palmer Hospital for Children

Residential Care

Aspire Health Partners, Inc.

Created Families, Inc.

Attain, Inc.

Devereux Foundation of Florida, Inc.

Boys Town of Central Florida, Inc.

Friends of Children & Families, Inc.

Bridging Lives, Inc.

The Key Haven Group, Inc.



Protect and inspire every child, every day.

4001 Pelee Street | Orlando, FL 32817 | 321-441-2060 | protectandinspire.org

For more information on fostering and adoption, please call 866-90-CHILD (24453)

Sponsored by CBCCFL and the State of Florida, Department of Children and Families