

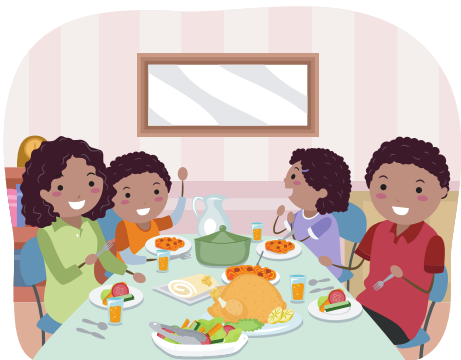
LEVEL 1 LICENSING

When a child is not able to safely remain at home with their parents, there is no better place for them than with a relative or trusted individual they already know.

With you, they will find familiarity, comfort, and the anchor they need during what can be a scary and traumatic time.

At Embrace Families, we recognize that caring for a child (or additional children) may not have been anticipated and there are adjustments that will need to be made in your life. Our caregiver support partners are here to work alongside you and support you every step of the way.

One great benefit available exclusively to relative and non-relative caregivers is referred to as "Level 1 Licensing." The benefits available to you as a licensed caregiver are substantial.



Once you complete the licensing process:

- You will receive a monthly stipend of \$333 for each child placed in your home.
- You are eligible to receive benefits available only to licensed caregivers to help with the child's care; such as additional money for school clothes and supplies.

So, what does it take?

The Level 1 Licensing process includes participating in a home study, background screening for all adults living in the household, and completing online training to help understand the child welfare system. The process has been streamlined, making it possible to complete in just 60 days.



More than anything, we want you to know this: You are not alone.

Embrace Families, your Caregiver Support Manager, and our team of experts are here to help you find answers and navigate the system, so that you can focus on meeting the emotional and physical needs of the children you have welcomed into your home.